



Suzanne Connolly
Governance Officer
Direct: 020 8132 2624

e-mail: suzanne.connolly@enfield.gov.uk

ENVIRONMENT & CLIMATE ACTION SCRUTINY PANEL

**Tuesday, 8th February, 2022 at 7.00 pm in the Conference Room,
Civic Centre, Silver Street, Enfield, EN1 3XA**

Membership:

co : Mahmut Aksanoglu, Daniel Anderson, Susan Erbil, Charith Gunawardena, Ayten Guzel, Ahmet Hasan (Associate Cabinet Member (Enfield North)), Lindsay Rawlings and Andrew Thorp

AGENDA – PART 1

1. WELCOME & APOLOGIES

2. DECLARATIONS OF INTEREST

Members of the Committee are invited to identify any disclosable pecuniary, other pecuniary or non-pecuniary interests relevant to the items on the agenda.

3. MINUTES OF THE PREVIOUS MEETING (Pages 1 - 10)

To agree the minutes of the previous formal meeting held on 9 December 2021, and the notes of the informal meeting held on 11 January 2022.

4. RECYCLING PERFORMANCE & FLYTIPPING ISSUES (Pages 11 - 42)

To receive an update on the recycling performance and flytipping issues.

5. THE GREEN & BLUE INFRASTRUCTURE STRATEGY (Pages 43 - 58)

6. DATE OF NEXT MEETING

ENVIRONMENT & CLIMATE ACTION SCRUTINY PANEL - 9.12.2021**MINUTES OF THE MEETING OF THE ENVIRONMENT & CLIMATE ACTION SCRUTINY PANEL HELD ON THURSDAY, 9TH DECEMBER, 2021**

MEMBERS: Councillors Mahmut Aksanoglu, Daniel Anderson, Susan Erbil, Charith Gunawardena, Ayten Guzel, Lindsay Rawlings and Andrew Thorp

Officers: Sarah Cary (Executive Director Place), Richard Eason (Healthy Streets Programme Director), Stephen Skinner (Head of Highways Services), Suzanne Connolly (Governance Officer)

Also Attending: Cllr Ian Barnes

1. WELCOME & APOLOGIES

The Chair welcomed members to the meeting.

Apologies for absence were received from Cllr Ahmet Hasan.

2. DECLARATIONS OF INTEREST

Cllr Lindsay Rawlings declared an interest in that she attended Bowes School as a child.

3. MINUTES OF THE PREVIOUS MEETING

Cllr Charith Gunawardena felt that important comments were missing from the minutes and had emailed his suggested additions. Updates to the Meridian Water questions and answers had been circulated by Peter George. **ACTION:** If members have concerns or require any additional clarification these should be sent via the Chair by the end of Tuesday 14th December. Cllr Gunawardena would like the Meridian Water Environment Strategy to be brought to the January meeting. **ACTION:** Panel members to review the document and respond to the Chair by Tuesday 14th December in order for it to be sent to Officers for an accuracy check.

Members agreed the proposed changes to the minutes. **ACTION:** Suzanne Connolly to make amendments.

4. SCHOOL STREETS PROGRESS & QUIETER NEIGHBOURHOODS UPDATE

Richard Eason, Healthy Streets Programme Director, delivered a presentation highlighting the reasons behind the changes. The main area was an increase

ENVIRONMENT & CLIMATE ACTION SCRUTINY PANEL - 9.12.2021

in motor vehicle use in the borough as well as the increase in “C” and “unclassified” roads usage in the last ten years.

In response, members commented as follows:

1. Cllr Andrew Thorp voiced his disappointment with the report and the lateness of the submission. Cllr Thorp stated he was a great supporter of School Streets and thanked officers for their work on this. However, highlighted that the use of AMPR cameras rather than barriers could create safety risks. He would be interested to know how many schools were using the cameras and what studies had taken place on the risk.

In response, Richard Eason stated that the use of the cameras made the scheme more sustainable as it was difficult to recruit volunteers for the barriers. Barriers could be used alongside cameras and was at the school's discretion. It was noted that some volunteers and residents had received abuse. Richard felt the use of cameras would improve safety compared to having nothing in place. All schools go through safety processes – Cllr Thorp would like this to be shared, Richard would check and advise **ACTION**. Cllr Thorp also asked about data on “near misses”. Richard advised this would be with the police.

2. Cllr Thorp asked where the money goes from fines issued. Richard stated it goes towards the running of the schemes and if there is any surplus it goes back into transport systems in the borough and is ringfenced for transport services such as TFL concessionary fares.

3. Cllr Lindsay Rawlings would have welcomed the presentation in advance of the meeting. It was queried about public transport however Richard had just focused on “active travel”.

There were some concerns over Sketty Road and the roadworks on Southbury Road and noted that the school wants to make changes.

4. Cllr Ayten Guzel was interested in the uptake in cycling and walking to school and asked if there were any grants or schemes to help families, for example with the purchase of bikes.

Richard responded saying this had been looked at, including Dr Bike, second hand bike markets and “try before you buy”. It was also hoped to introduce Cargo bikes. Cllr Ian Barnes agreed this was very good and it would be looked into further.

5. Cllr Susan Erbil asked if the Enfield policy was in line with the Government's policy. Cllr Barnes confirmed it was and all were working towards the same goal.

6. Cllr Daniel Anderson emphasised his disappointment with the report which did not provide any updates and felt the Bowes LTN should have been included. Cllr Anderson stated that over populated areas had caused the increase in cars and that some areas had poor public transport routes.

ENVIRONMENT & CLIMATE ACTION SCRUTINY PANEL - 9.12.2021

Richard stated that the policy was for residents to make transport choices and not default to a private car.

Cllr Anderson felt the solution had been decided before properly evaluating the problem. Richard advised that Quieter Neighbourhoods had been around for a long time and pilots had taken place. The problem was clear; too much traffic and safety.

Richard extended his apologies to the panel for the difference in expectations around his report.

7. Cllr Anderson raised points in relation to the Bowes report.

At this point the meeting was adjourned for five minutes due to disruption from the public gallery.

8. Cllr Charith Gunawardena asked Cllr Barnes for clarification around healthy streets and the emissions from short journeys which were low. Cllr Barnes was unclear on the question however stated he wants to reduce emissions. It was noted that emissions were not just from exhausts but also other things such as brake pads.

9. Cllr Gunawardena raised the Fox Lane report and Southgate roundabout. Cllr Barnes would look at this once the report comes out **ACTION**.

10. Cllr Ayten Guzel asked if officers were engaging with TFL about traffic light sequences. Richard stated that they can discuss it with them however it was ultimately their decision. **ACTION**: Richard to check and feed back to Cllr Guzel.

11. Cllr Andrew Thorp voiced that the biggest update was the Bowes Report and felt it should be discussed at this meeting. The Chair clarified that it had to go through the appropriate processes such as call-in and the OSC. **ACTION**: Chair to discuss with the Chief Executive.

At this point the meeting was adjourned for ten minutes due to disruption. The public gallery was cleared and Cllr Susan Erbil, Cllr Ayten Guzel and Cllr Daniel Anderson did not return to the meeting.

5. **UPDATE ON THE HIGHWAY'S CAPITAL PROGRAMME & EFFECTIVENESS**

Stephen Skinner, Head of Highways Services, talked through the report. In response the panel commented as follows:

1. Cllr Andrew Thorp thanked Stephen for the comprehensive and informative report and asked what constitutes "resurfacing of the whole road". Stephen stated it was one end to the other. This differs from "partial schemes" where shorter lengths, less than a whole road, were resurfaced in order to maximise value for money and public satisfaction. Occasionally, just the centre strip of a

ENVIRONMENT & CLIMATE ACTION SCRUTINY PANEL - 9.12.2021

whole road might be resurfaced; this is a technique used in heavily parked roads where only the central strip is worn and requires treatment. It was felt there should be clarity around this to improve public perception.

2. Cllr Lindsay Rawlings echoed thanks for the report and shared that she had noticed few potholes on the road which was a good example to other councils. Cllr Rawlings asked if recyclable materials had been looked into. Stephen advised that Enfield were one of the first London boroughs to pilot some new techniques and there were research groups and testing facilities, however it was hard to carry out real-life tests.

3. Cllr Charith Gunawardena thanks Stephen for the report and asked about funds for highway tree planting. He was particularly interested in this for each ward; Stephen would check if this was available and report back **ACTION**. Cllr Barnes was hoping to increase trees in the east of the borough.

4. Cllr Mahmut Aksanoglu asked about Poynter Road and when it might be scheduled to be resurfaced. He had received a response from the Highways team in relation to the weather playing a major role in whether it might be resurfaced. Stephen explained that the weather caused deterioration of road surfaces, particularly over the winter, which might affect their relative priorities for treatment, however would check on that road **ACTION**. It was noted there was a long list of roads that were priority.

6. WORK PROGRAMME 2021/22

The work programme was noted.

Members highlighted the importance of having enough time to properly discuss items and reports need to be sent on time.

Cllr Gunawardena had prepared a report in relation to Meridian Water and this would potentially be brought to the January meeting.

Cllr Gunawardena stated he would like the questions and answers to be included in the minutes.

7. DATE OF NEXT MEETING

The date of the next meeting was noted.

The meeting ended at Time Not Specified.

NOTES FROM THE INFORMAL MEETING OF
ENVIRONMENT & CLIMATE ACTION SCRUTINY PANEL
TUESDAY 11TH JANUARY 2022

Attendees present: - Cllr Mahmut Aksanoglu, Cllr Susan Erbil, Cllr Ahmet Hasan, Cllr Andrew Thorp, Cllr Lindsay Rawlings, Cllr Daniel Anderson, Cllr Charith Gunawardena, Doug Wilkinson, Jeremy Chambers, Claire Johnson, Dominic Millen, Ned Johnson, Leslie Currie, Koulla Panaretou

Apologies: - Cllr Ayten Guzel

The Chair (Cllr Aksanoglu) welcomed everyone to the meeting and explained that this was an informal meeting of the Environment & Climate Action Scrutiny Panel. This means that it is not a formal meeting of the authority and Councillors need to be aware that joining this meeting is not recorded as attendance for the purposes of Section 85 Local Government Act 1972.

The meeting will be managed as if it were an in-person formal meeting. Officers will present reports and answer questions from Panel members in the usual way. A Committee Services Officer is in attendance to take notes. The notes will be presented to the next formal meeting of the Panel for formal ratification as the Panel sees fit.

During the introductions, Cllr Andrew Thorp, expressed his dissatisfaction at the above decision and that the public document pack hadn't been made public. Cllr Anderson requested a new Chair be appointed for this meeting due to a vote of no confidence and asked Cllr Thorp if he would stand in. Cllr Gunawardena seconded this request. As this was an informal meeting, this decision was agreed by the Monitoring Office. At this stage, Cllr Aksanoglu, Cllr Susan Erbil and Cllr Hassan left the meeting. Due to the informality of the meeting, quorum was not relevant, and the meeting continued.

1. DRAFT AIR QUALITY ACTION PLAN

The Panel received the draft Air Quality Action Plan from Ned Johnson.

The following information was highlighted:

- Air pollution is alleged to be the world's biggest preventable killer, linked to several illnesses including heart disease cancer, stroke and many others.

- Major sources include traffic (burning of fossil fuels), industry, domestic heating installations.
- Monitoring takes place behind the scenes, with 4 real-time monitoring stations in the borough. 10 diffusion tube sites and the use of computer dispersion modelling, where data is used to map the whole of the borough and predict concentration, advising how pollution and air quality is changing over time.
- The Air Quality Action Plan was first issued in 2003 and updated in 2012, and 2015. The new plan is ready for consultation and sets out all the actions the council can and is taking to reduce nitrogen dioxide and PM10.
- The new actions contained in the Action Plan mainly cover traffic and encourage the use of public transport, walking and cycling.
- It must be noted that the Council do not control the major roads, which belong to TfL. (M25 belongs to Highways Agency).
- The risk is to everyone and the responsibility to improve air quality is for everyone too.

The following comments and questions were received:

- a. Should the Council be doing more to monitor small scale pollution locally?

In response: The Environment Agency used to notify the Council for any breaches, but this has not happened for many years now. The emissions from the incinerator (where particles are distributed and is one of the cleanest ones in Europe) are very small compared to the road emissions (concentrated to one area). **Action Ned Johnson: Investigate modelling undertaken by London Waste and report back to the Panel.**

- b. Why has Nitrogen Dioxide levels decreased over time? Is weather a factor for PM10 monitoring?

In response: As technology improves the level of emissions decreases. Cleaner fleets will increase lower emission levels. Summer months generally have less windy days and particles do not disperse as rapidly and there is a higher representation. This significantly lowers in the winter months.

- c. The incinerator is a large building and its position on the A406 where there is already many vehicles driving by only increases pollution levels. Has this been looked at?

In response: Due to the volume of vehicles already passing through the area, it will not make much difference to pollution levels. The emissions disperse with the air and do not linger to cause excessive issues.

- d. How has traffic reducing measures improved air quality as the traffic seems to be relocated rather than reduced? How is it possible to measure air pollution in a road where traffic has been redirected?

In response: Monitoring has taken place since 2018 with the use of diffusion tubes situated at Brownlow Road, Winchmore Hill Road, Warwick Road, on A406 near Bowes Primary School, Fox Lane and on the boundary of Alderman's Hill. There is a drive to get people to walk and cycle in other areas of the Borough. Time will tell once figures have been analysed to consider people working from home during the pandemic and few vehicles on the roads. Also, time is needed to implement changes to fleets and once all cars are electric, there will be significant changes evident. **Action:**

Ned to provide feedback to the Panel from data collated from diffusion tubes.

2. CORPORATE BUILDINGS EMISSIONS

The Panel received an update from Dominic Millen, Head of Climate Action and Sustainability, on Emissions from Corporate Buildings.

The following information was highlighted:

- In 2020-21 corporate property emissions (from diesel, gas, oil, electricity) made up 26% of all Council emissions. Emissions indirectly through water heating technology only amounted to 0.4% but still a factor.
- The Climate Action Plan includes the following actions: heating system review, comprehensive refurb delivery, renewable energy capacity on Council sites, light sensors and timer installation, energy sub-metering, water metering installation, staff behaviour campaign and switch to renewable energy supplies.
- General rule is that the larger the building, the higher the emissions.
- Steps are being taken to reduce emissions from buildings by providing fabric upgrades, the use of smart systems and behavioural change.
- Schools are being supported via a specific handbook and climate action forum.
- Council housing communal usage linked to related upgrade programmes.
- Many physical improvements are currently ongoing, including retrofitting, piloting connections with Energetik heat network and development plans for future improvements including decarbonisation.
- Consumption reduction is being encouraged through sensor installations and improved automated controls.
- The Council have now employed a water monitoring officer to actively work on supply management.

The following comments and questions were received:

- a. What impact does staff leaving the computers on Stand-by at the Civic Centre have.

In response: most staff have laptops and tablets but there are other pieces of equipment left on so there is an opportunity to highlight this to staff via internal communications.

- b. As more staff are working from home, has the energy usage shifted from the Civic Centre (including lights being left on).

In response: staff working from home was considered in the [Enfield Carbon Emissions Review for 2020/21](#).

- c. Of the £3m of work planned, are these works intended to be done as part of the retrofit to decarbonise? What impact with these works have across Enfield?

In response: the works had already been identified so were put forward as part of a bid for Public Sector Decarbonisation Scheme funding. There have also been complementary works delivered as part of planned improvements. In terms of the impact on carbon emissions, these have to be viewed in the context of the Council's target to be a carbon neutral organisation by 2030. It is also preferable to do something and make use of external funding.

3. Meridian Water Panel Report

The Panel received the Panel report of the Meridian Water Environmental Sustainability Strategy (October 2021).

The Monitoring Office advised that as the meeting was informal, the panel can proceed with discussions at this meeting and formally agree at the next meeting when these notes have been considered and future steps taken.

Cllr Gunawardena made the following remarks:

The Panel's recommendations for Meridian Water had been provided to officers for checking and that no errors had been identified with the report and there was one comment. However, the final report had still not been provided to Members for checking.

The revised minutes of the meeting where Meridian Water was discussed have not been distributed despite the amendments being approved by the Panel at the last meeting.

Cllrs Thorp, Rawlings and Anderson spoke in support of the report and reiterated that Members had serious concerns about the deficit of open space

at Meridian Water, which, amongst other things, will be counterproductive to health and wellbeing.

Cllr Anderson noted that this was not the first iteration of this report and that it had taken 15 months to get to this stage.

Cllr Gunawardena spoke about the previous report that the Panel had written had been an enormous amount of work and was fully referenced and said that he would also like this report to be submitted to officers for checking as this work should not be ignored.

Cllr Gunawardena said that he thought that the Council needs to come up with its own view about the impact of the incinerator and conduct its own risk assessment and not rely on reports from NLWA, particularly in regard to the incinerators impact on Meridian Water and the tall towers proposed. Also that Members should be provided with data for diffusion tubes by locations over the last 5 years.

The panel also agreed to get both the questions and answers from Peter George added to the report.

The following comments and questions were received:

- The minutes of the first meeting have still not been distributed and accepted at this meeting.

In response: a check will be taken and followed up at the next meeting.

Action: Claire Johnson

- It was noted that the report covered some significant and important recommendations and clearly identifies that the amount of open space is insufficient for the number of residents envisaged.
- The Panel expressed their wish for this report to be placed on record with the expectation that it is adopted in the future.

This page is intentionally left blank

Environment & Climate Action Scrutiny Panel

Recycling and Fly Tipping

Tuesday 8th February 2022



Contents

- How do we measure and monitor recycling performance?
- Recycling Improvements
- Recycling in Parks
- Fly Tipping Issues
- Bulky Waste Update

How do we measure recycling?

NI192 Recycling Rate Calculation

Total Household Recycling

Wheeled bin recycling (excluding rejects) +
food waste + garden waste
+ *Other recycling*

Total Household Waste

(total household recycling + wheeled bin
residual + other residual)

Other recycling:
communal bins/flats,
RRC, NLWA credits

Other residual:
communal
bins/flats, bulky
waste
collections, street
cleansing, RRC,
clinical waste

Not in scope of NI192:

- commercial/trade waste
- Flytip tonnages
- Grounds maintenance

How do we monitor recycling performance? RRP

Background:

- In May 2018, the Mayor published the London Environment Strategy (LES)
- As part of the LES, each London authority produced a **Reduction and Recycling Plan (RRP)**
- London Boroughs have a statutory duty to act in general conformity with the LES prepared by the Mayor of London
- The RRP tracks current and projected activities to improve waste and recycling, including carbon impacts

How do we monitor recycling performance? RRP

Reduction and Recycling Plan Objectives:

- Drive resource efficiency to significantly reduce all waste but also focusing on food waste and single use packaging
- Maximise recycling rates
- Reduce the environmental impact of waste activities
- Maximise local waste sites in London

Why is the Reduction and Recycling Plan (RRP) important?

- The RRP acts as our overarching waste and recycling strategy to align with targets in the Mayor's London Environment Strategy (LES) – in the same way we have Local Implementation Plan (LIP) which aligns with the Mayor's Transport Strategy
- It is a public document
- Allows us to track our direction of travel in line with local and national targets
- Detail is fed directly from the **waste and recycling improvement board**
- It is a dynamic, working document

Enfield's Reduction and Recycling Plan (RRP)

Minimum level of household waste recycling service in LES

Strategy Proposal 7.2.1.a sets a minimum level of service for household waste recycling that waste authorities should deliver by 2020:

- All properties with kerbside recycling collections to receive a separate weekly food waste collection service
- All properties to receive a collection of, at a minimum, the six main dry materials, 1) glass, 2) cans, 3) paper, 4) card, 5) plastic bottles and 6) mixed rigid plastics (pots, tubs and trays).

Enfield's Reduction and Recycling Plan (RRP)

London-wide targets in LES:

- To cut food waste and associated packaging waste by 50 per cent per person by 2030
- To achieve a 65 per cent municipal waste recycling rate by 2030, including a 50 per cent recycling rate for local authority collected waste (LACW) by 2025
- To send zero biodegradable or recyclable waste to landfill by 2026
- London to manage net 100 per cent of all the waste it produces by 2026



2021/22 Outreach Plan

Outreach work	Start Date
Estate recycling trial starts	1 June
Contamination – borough wide message	14 June
Contamination – targeted areas	28 June
Kerbside recycling – borough wide	5 July
Kerbside recycling – target groups 1-4	12 July
Contamination – reject bins at kerbside (Monday – Wednesday collections)	26 July
Recycling at Estates – wider roll out	August - ongoing
Schools	September - ongoing
Tackle contamination at kerbside (Thursday – Friday collections)	8 Nov

Improving recycling from wheeled bins

Recycling performance

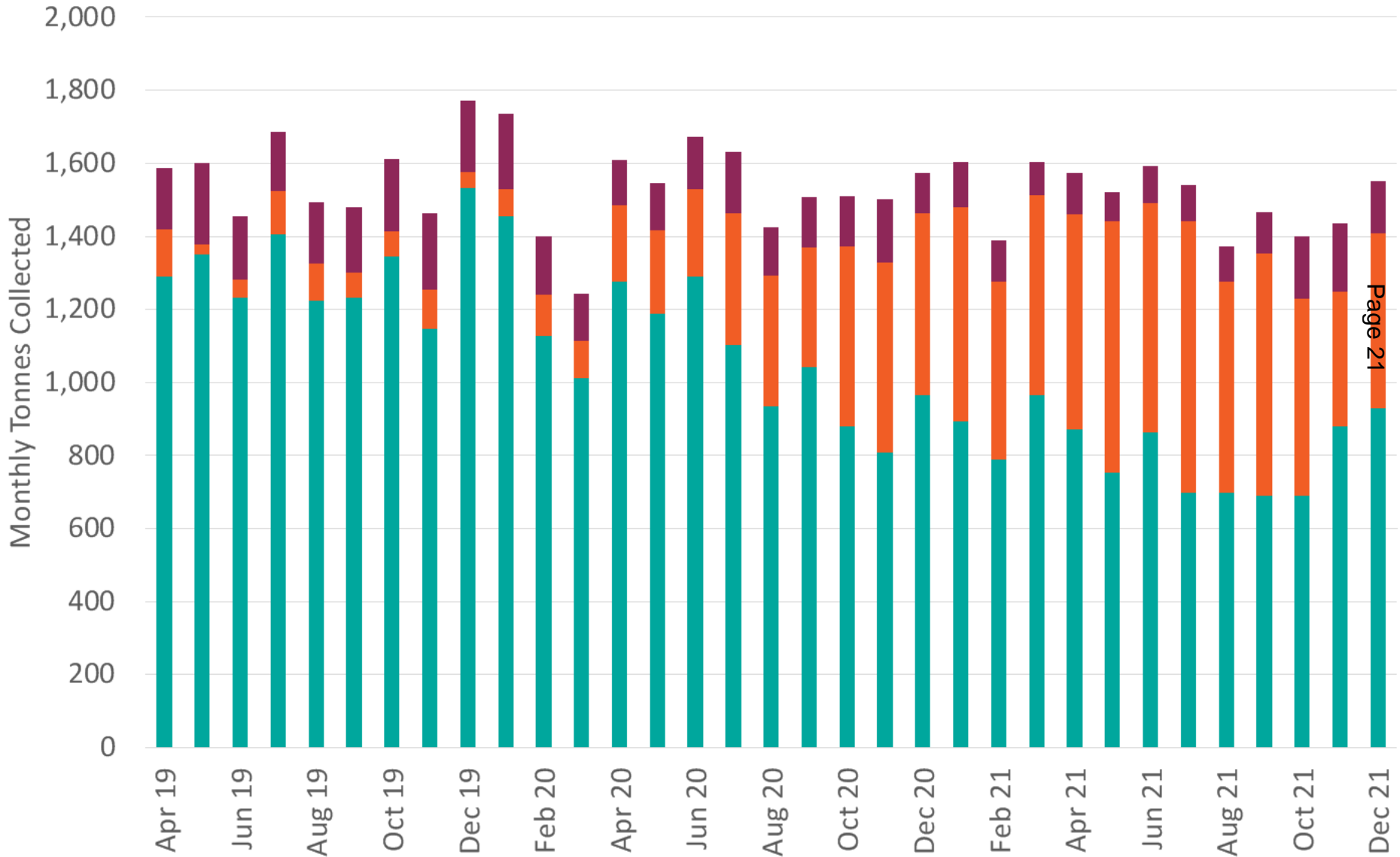
- Wheeled bin properties: ~55%
- Flats and other recycling: ~17%

Two key areas for improving recycling from properties with a wheeled bin:

- Increasing recycling tonnages
- Reducing contamination levels

Contamination – Wheeled Bins

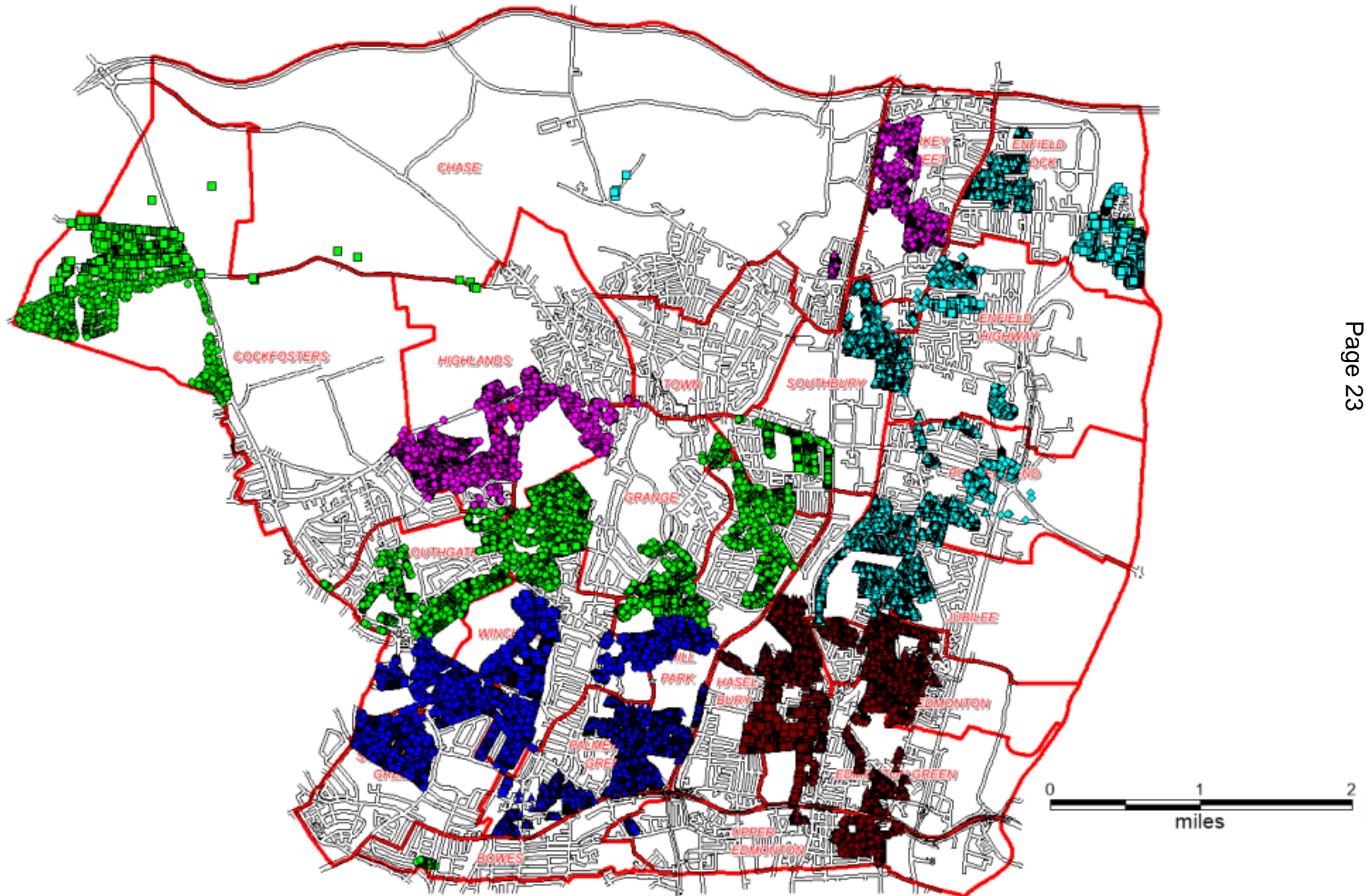
■ Wheeled Bin Dry (excl Rejects) ■ Wheeled Bin Rejected Loads ■ MRF Rejects



Improving recycling from wheeled bins

- **Increasing dry recycling tonnage:**
 - Capturing more food than expected but less dry recycling
 - Started face-to-face engagement with 19,717 properties (July-August 2021)
 - Glance card with information on recycling and food recycling were dropped at all properties
 - Face-to-face engagement was 28% contact rate
 - Borough-wide comms campaign

Face-to-face engagement

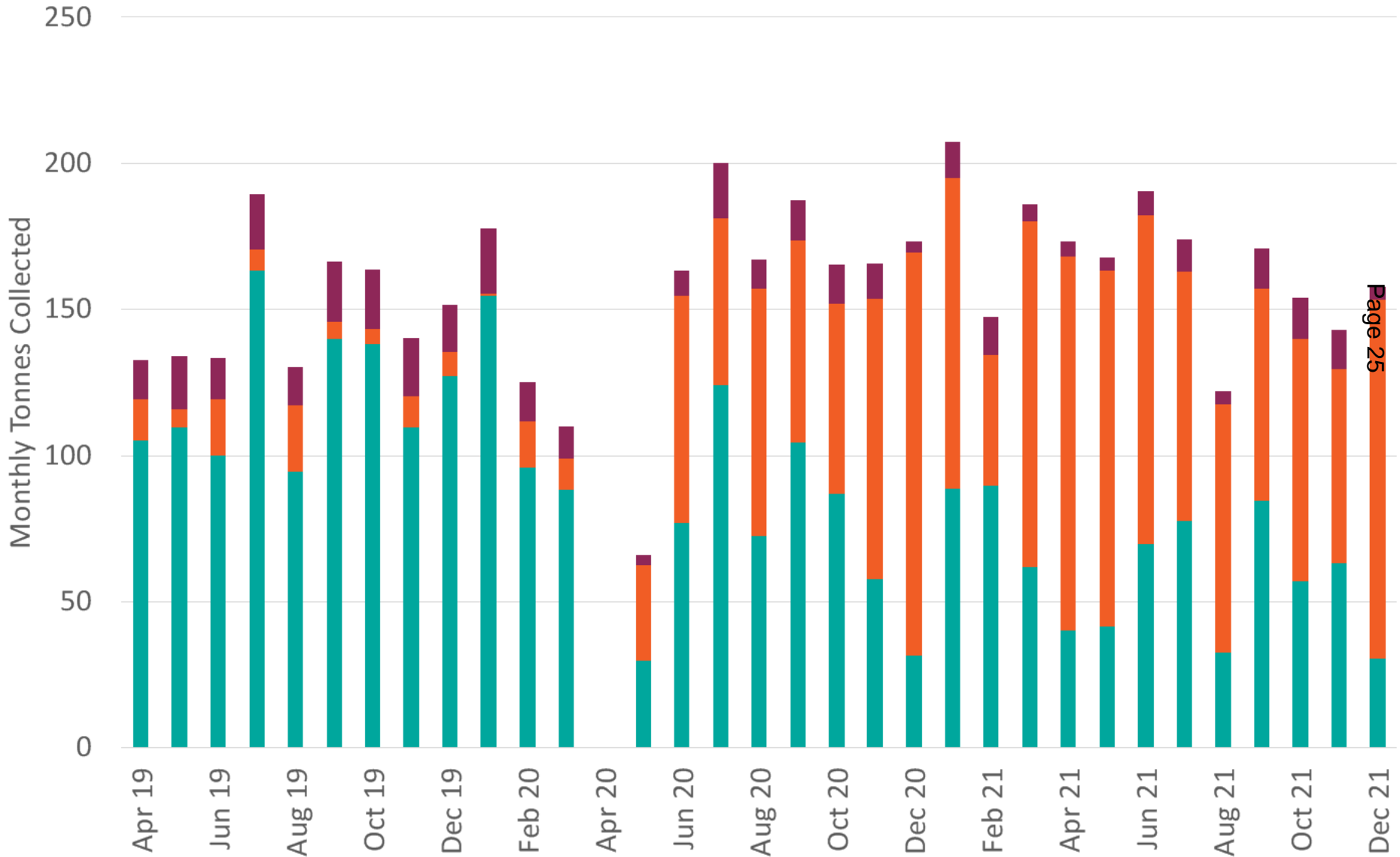


Improving recycling from wheeled bins

- **Reducing contamination levels (since 28 June 2021):**
 - Contamination is having a significant impact on recycling performance
 - In June/July a total of 7,603 properties of which 2,772 bins were found contaminated during the visit
 - In Nov/Dec a total of 14,179 properties of which 8,639 bins were found contaminated during the visit
- **Outcome:**
 - Minimal impact to date
- **Next Steps:**
 - Moving to an enforcement approach – very successful in the past
 - Planning to monitor around 10,000 properties that regularly contaminate (Feb – Mar 22)
 - Persistent contaminators will receive up to 3 letters over 6 weeks, followed by potential enforcement

Contamination – Communal Bins

■ CB Dry ■ CB Rejected Loads ■ CB Rejects



Improving recycling from flats (Enfield Housing)

- **Trial started 1 June for three months (3 location)**
 - Based on trials by ReLondon (flats toolkit)
 - Included new bins, clear messaging, engagement with residents
- **Phase 1**
 - Wider estate recycling ~36 sites (see appendix)
 - Working in collaboration with Enfield Housing
- **Metrostor audit:**
 - 63 sites visited with waste, commercial, and housing
 - Focus on more difficult sites where space is limited
 - Audit will provide potential solutions for bin locations, types, etc.
- **Phase 2:**
 - Work in progress
 - ~60 sites identified, being reviewed
 - To be agreed at WRIB

Trial Results

- Monitoring was done for 10-11 weeks following new bin installation
- On average bins were 15-66% full over the monitoring period
 - Max fill was 90-100% in some weeks
- However, the key result is the low contamination
 - Three sites found to be uncontaminated each week throughout the monitoring
 - The other three sites were contaminated 3-4 times
 - BUT contamination was at acceptable levels all but once!

Recycling at flats (Enfield Housing)

Alvin House N9



Beale Close N13



The Poplars N14

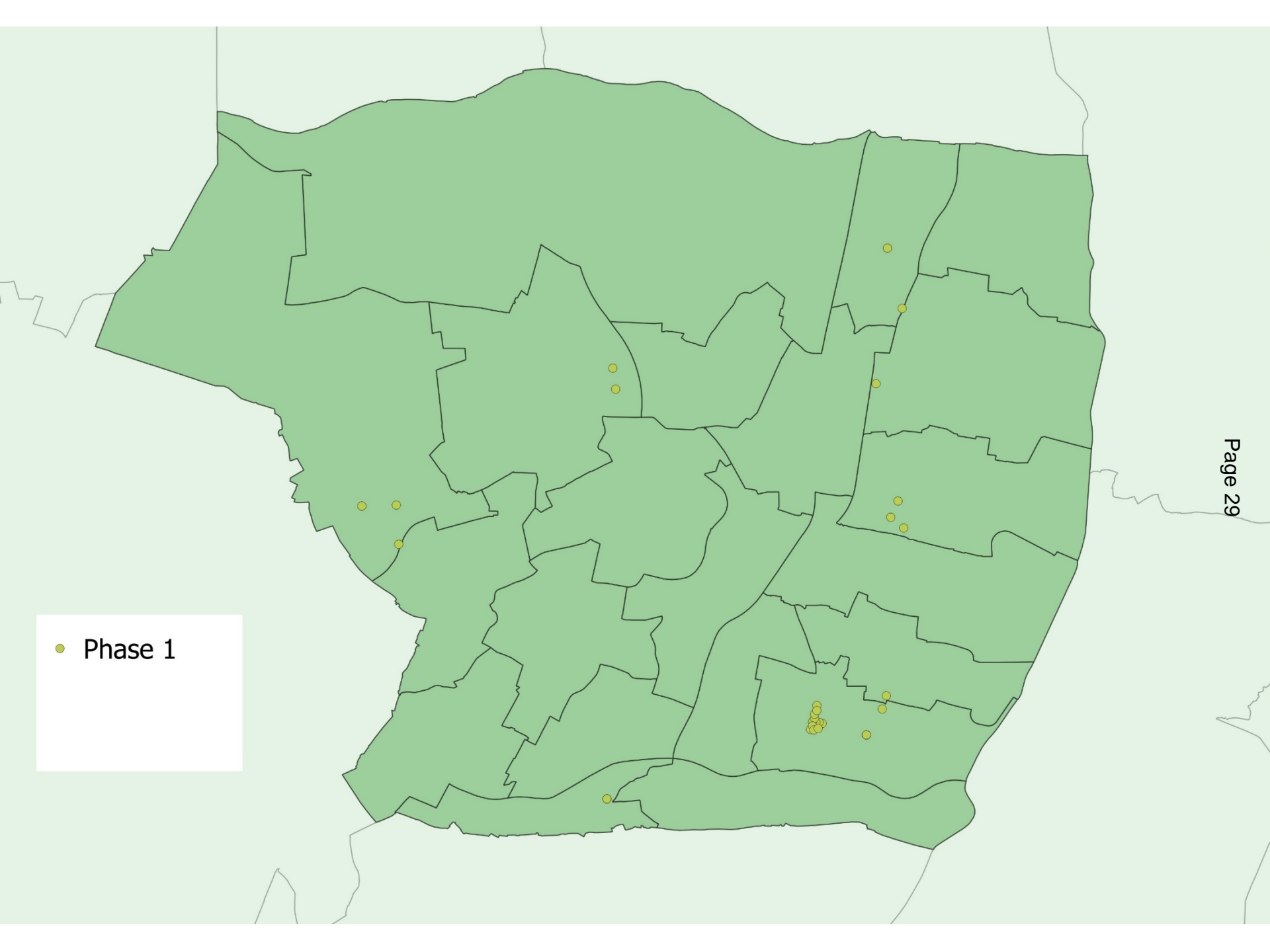


Chiltern House N9



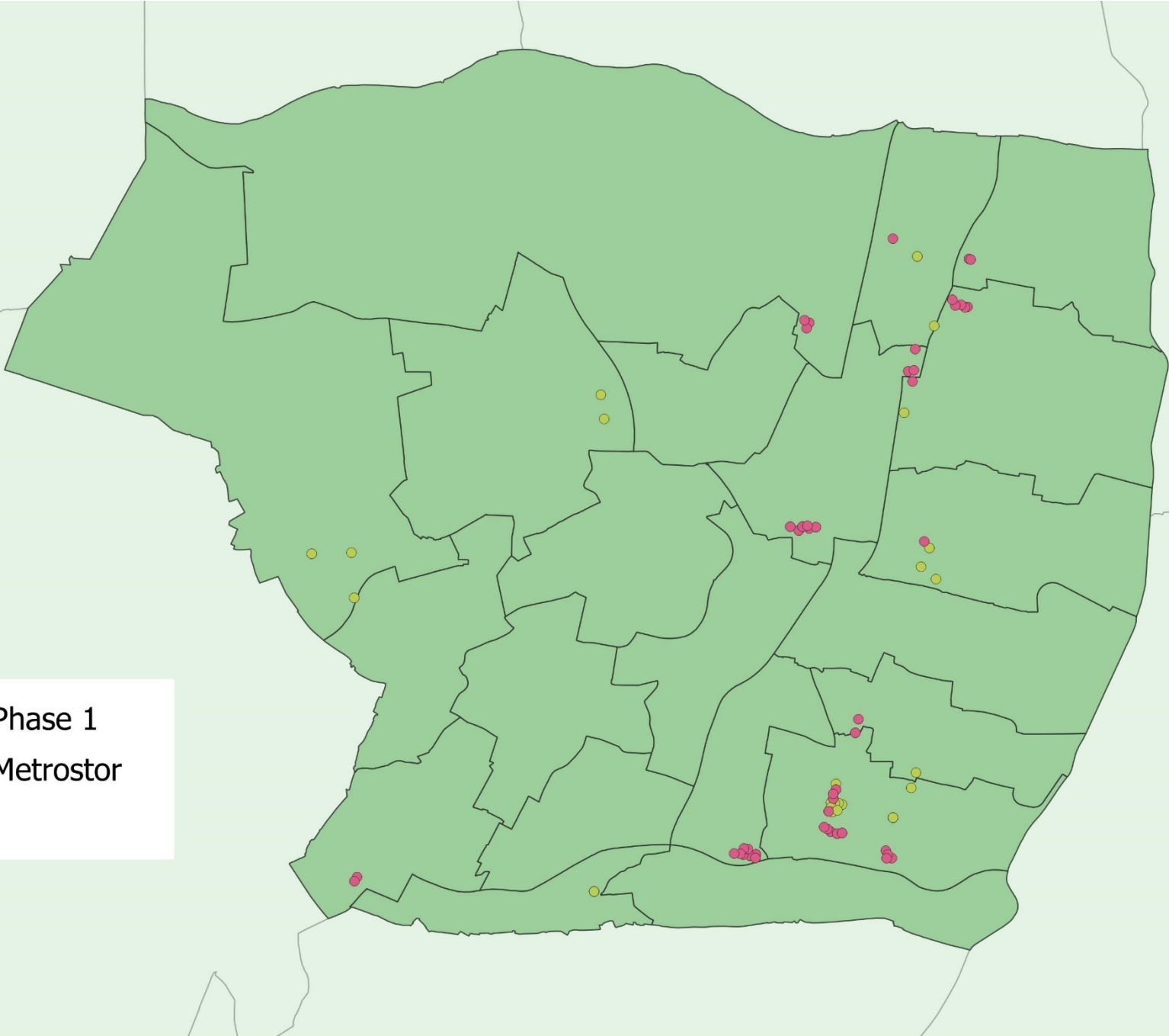
Jeremys Green N18



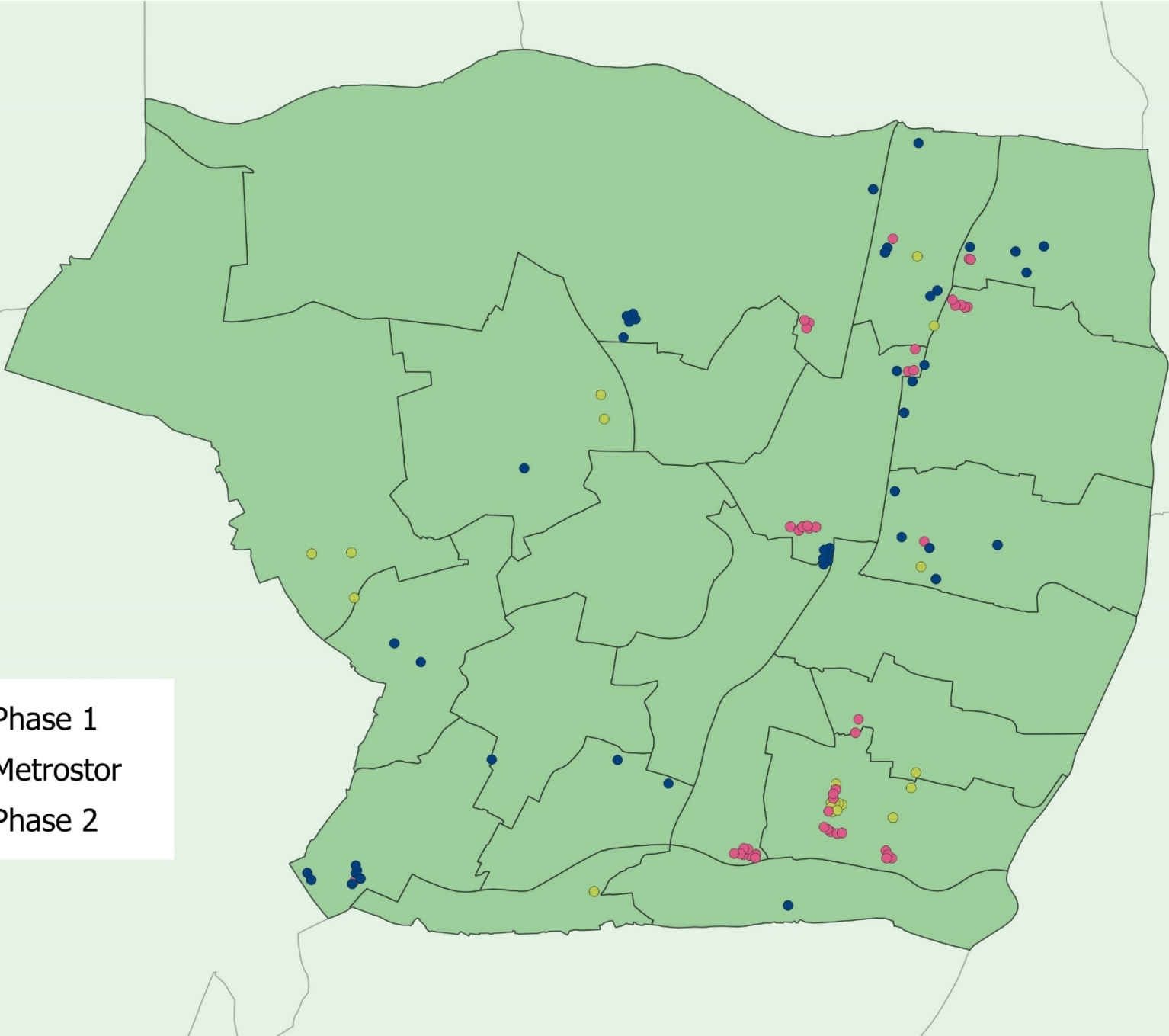


● Phase 1

- Phase 1
- Metrostor



- Phase 1
- Metrostor
- Phase 2



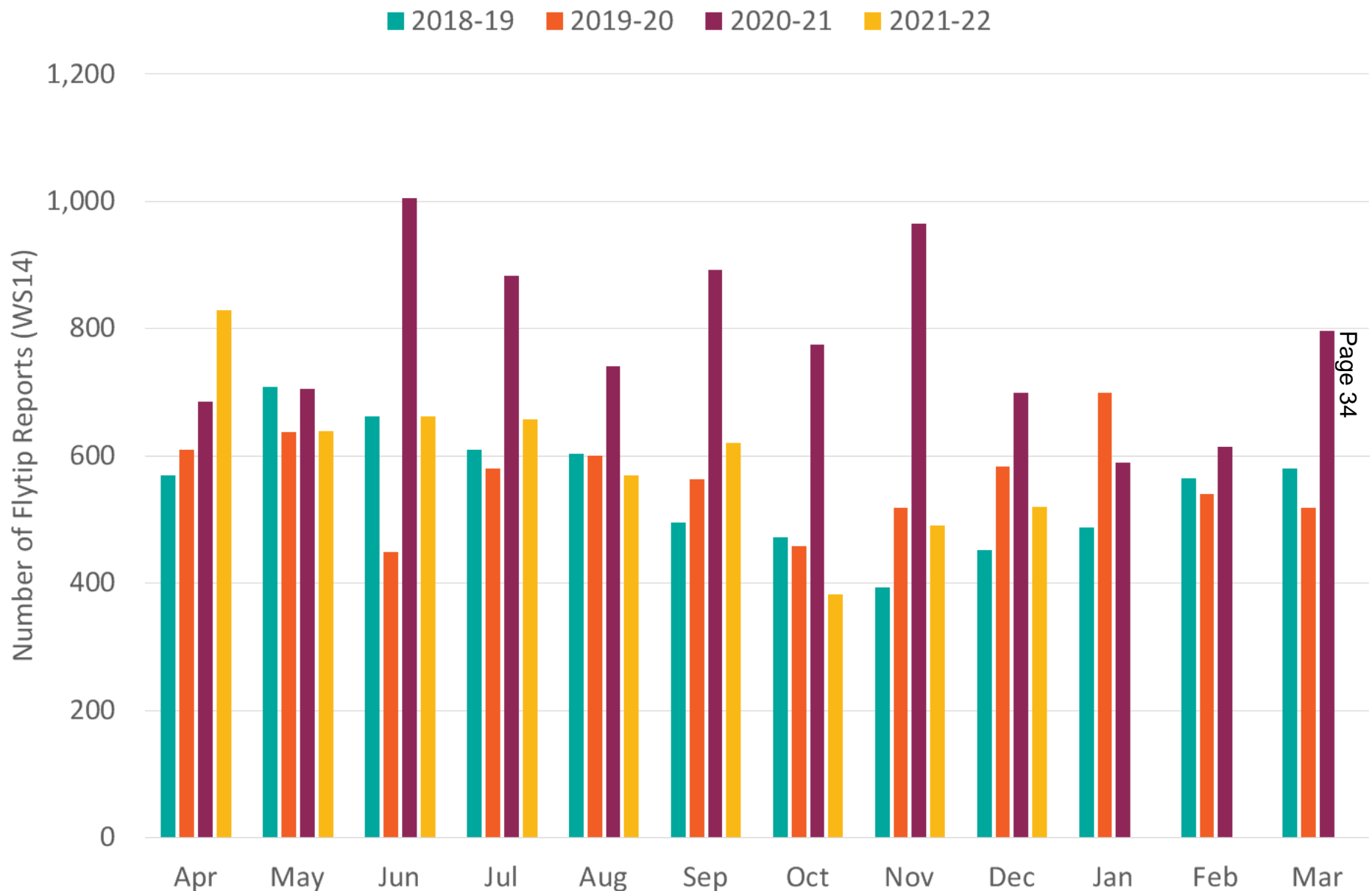
To recap - over the next 3-6 months

- Reducing contamination – implement current contamination policy which moves to an enforcement approach
- Engaging with identified properties including through face-to-face
- Further estate recycling
 - Up to 60 sites
 - Working in collaboration with Enfield Housing
- Waste and Recycling Improvement Board (WRIB)

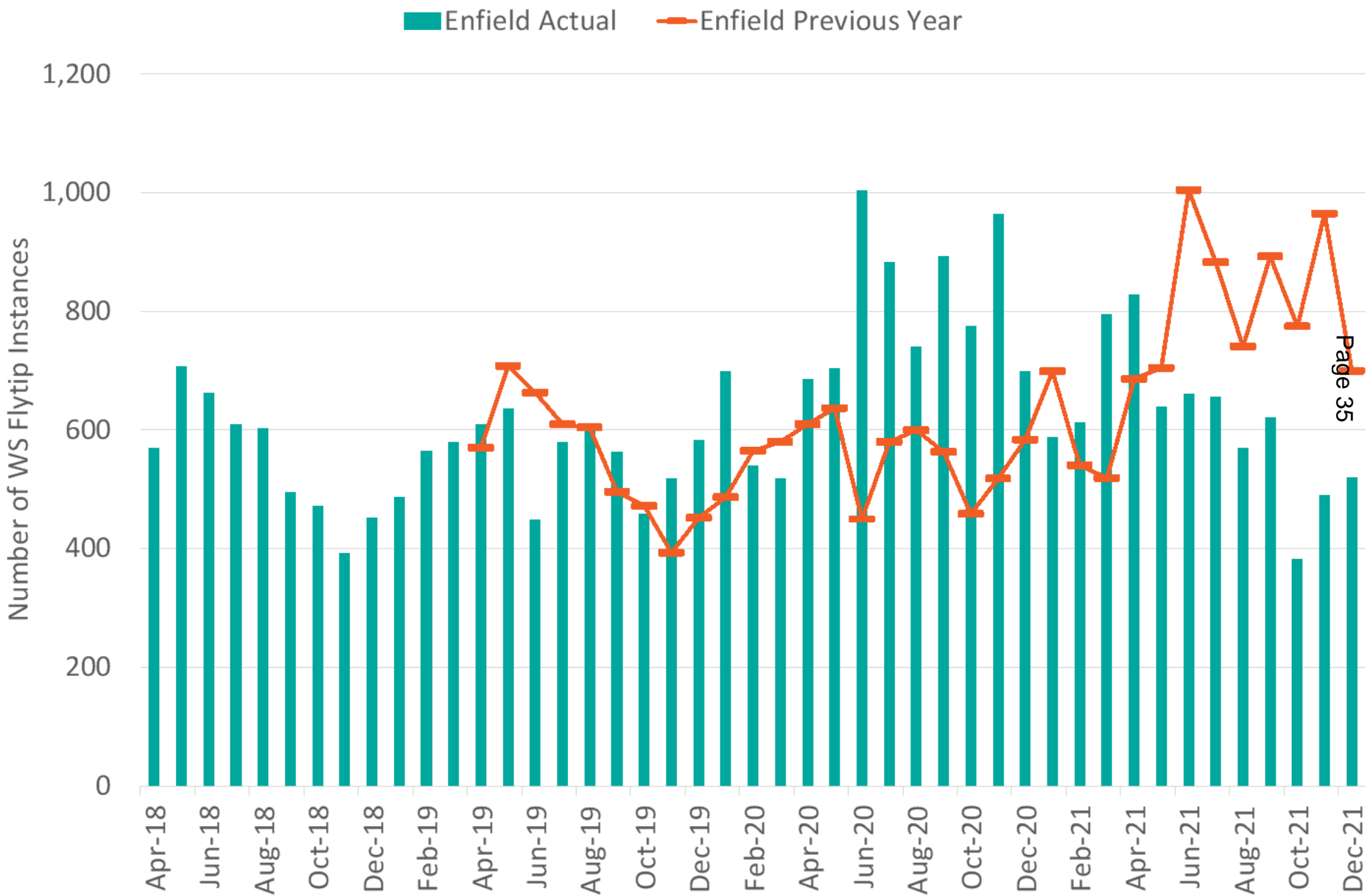
Recycling in Parks

- Looking to pilot recycling bins in four parks
- The recycling bins will offer park users to recycle their 'on the go' items such as plastic and glass bottles and cans
- Further analysis of the waste generated will be undertaken to ensure clear, simple instruction to users
- Recycling opportunities are also being explored for local businesses and community groups

Flytips (1/2)



Flytips (2/2)



FPN/Prosecutions

Month	FPNs issued for rubbish dumped	Other statutory Notices served	Proactive street inspections	Prosecutions *
April 2021	235	55	743	
May 2021	127	68	767	
June 2021	232	54	551	
July 2021	223	52	673	
August 2021	221	73	788	
September 2021	258	197	508	
October 2021	278	145	862	
November 2021	373	106	605	10
December 2021	373	93	465	18
TOTAL	2,320	843	5,962	28

*There were 58 prosecutions in Jan 2022 (results awaited), 88 cases submitted for Feb 2022 hearings and currently preparing prosecution files for March hearings

Fly tipping Communications Campaign

- Flytipping is a national problem and increased by 16% in England in 2020/21 compared to 2019/20
- In July 2021, the Council declared a war on flytippers
- Resources were increased for flytip removal and enforcement and a new communications campaign launched to educate/inform and publicise actions taken



Work with Schools



- The Recycling and Waste Enforcement teams are collaboratively working to educate pupils and parents on environmental issues
- We offer assemblies, class room activities and roadshows
- Feedback from schools has been excellent
- 28 schools have expressed an interest
- Schools Champions Group has been set up



Increased Resource

Waste Services

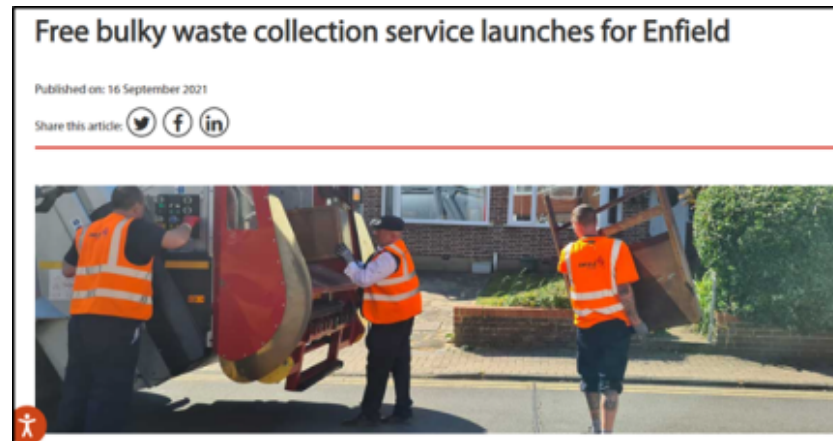
- 4 additional flytip crews collecting fly tips from public highway and council housing areas
- 3 additional refuse collection crews dedicated to council housing estates
- 2 'Main Road' Street cleansing cage vehicles have now been given refuse collection vehicles to remove flytips from flats above shops along main roads
- Vehicle replacement programme (greener fleet)

Waste Enforcement

- 2 additional waste enforcement officers dedicated to council housing estates
- One dedicated communications officer (fixed term)
- Access to 2 additional legal officers to process prosecution files
- Expecting 13 new deployable CCTV cameras w/c 31/1/22

Bulky Waste Update

- The new communications campaign and increased flytipping removal and enforcement resource is starting to reduce flytip numbers reported
- In September 2021, we introduced FREE bulky waste collections, which is assisting flytip number reduction further



- Still some way to go to get tonnage down, but together, these initiatives are starting to drive numbers down

Appendix

- [Toolkit - Flats recycling package – ReLondon](#)
- [Enfield Reduction and Recycling Plan - London Datastore](#)

This page is intentionally left blank

This report format is for scrutiny reports

London Borough of Enfield

Environment Forum

Subject: Blue and Green Strategy

Cabinet Member: Councillor Jewell

Executive Director: Sarah Cary

Purpose of Report

1. Update on Blue and Green Strategy

Relevance to the Council Plan

2. The Blue and Green strategy has been developed to support the overarching priorities set out in the Council Plan, namely:

Good homes in well-connected neighbourhoods:

The provision of high quality green and blue infrastructure is recognised as essential component of sustainable and inclusive communities, particularly in the face of climate change and the ongoing health crisis. Delivery of new affordable homes must go hand-in-hand with supporting infrastructure, such as new public parks, public spaces and routes, connecting neighbourhoods to services and the street network. Enfield's ambitious growth and place-making agenda offers a significant opportunity to develop healthier, cleaner and environmentally resilient places where people of all ages and backgrounds can enjoy good access to nature and open spaces. Green and blue infrastructure needs to be carefully planned to unlock growth opportunities and facilitate site development, especially along existing river corridors in association with new housing and employment opportunities. The approach set out in the strategy is to integrate parks and other public spaces into the heart of the borough's physical environment through partnership working and major strategic interventions (e.g. improvements to the public realm) to strengthen the connection between people and their local communities.

Sustain strong and healthy communities:

The recent covid-19 crisis has highlighted the importance of our parks, open spaces, trees and waterways to the health and well-being of our communities. As the population of the borough continues to grow and becomes more diverse, greater demands will be placed on existing infrastructure and services, with existing open spaces and natural habitats under increasing pressure from development. Coordinated action is needed to ensure that sufficient infrastructure capacity and funding is available to support the borough's growing communities (e.g. improved links between communities, food-growing opportunities and new sport and recreation facilities) and build resilience against the threats of climate change and poor health, especially in areas of greatest

need. In response, this strategy sets out how we will work with the local community and our partners to create opportunities to get more people visiting and enjoying our parks, open spaces and waterways, improve community safety and increase the prevalence of walking and cycling.

Build our local economy to create a thriving place:

The proposals set out in this strategy will help to kick-start the local economy and green recovery post lockdown and incentivise more sustainable means of transport, such as cycling and walking to reduce emissions and improve the health of our residents. Enfield's green and blue network is worth millions of pounds to the local economy as it increases property values, visitor numbers and business occupancy rates. This strategy seeks to capitalise on Enfield's unique offer as a visitor designation and green borough and help promote London's identity as a world-class national park city. We want to build on this to attract more green businesses and stimulate investment and activity within our town centres and growth areas, as we recover from covid-19 and the uncertain economic climate. We want to use green and blue infrastructure to create more attractive and thriving places where people want to live, work and enjoy leisure/culture.

Background

3. Blue and green infrastructure encompasses all of the 'green' (such parks, open spaces, street trees and routes) and 'blue' (such as reservoirs, lakes and waterways) elements of the landscape that contribute to the well-being of the borough's communities and its environment, quality of place and economic success.

The Blue and Green Strategy will have a 10-year shelf life but will be kept under regular review. It will be updated once the new Enfield Local Plan has been formally adopted. In the interim, the strategy will help implement the strategic objectives and policies set out in the existing adopted Local Plans (especially in terms of: managing flood risk, protecting biodiversity, improving east-west connectivity, improving access to open and green spaces, preserving the open character of the borough, creating a more integrated green and blue network and creating safer and more accessible environments) and the adopted London Plan. Strategy adopted in 2021 with associated aims.

Main Considerations for the Panel

4. Officers will provide an overview of the aims within the Blue and Green strategy and report on key targets and proposed activity relating to each aim. Officers are looking for feedback on proposals.

Conclusions

5. We are seeking to provide members of the Environment Forum an overview of the key aims contained within the Blue and Green strategy and an update on progress on activity towards achieving these aims.

Report Author: Marcus Harvey
Head of Parks Open Spaces and Leisure
Marcus.harvey@Enfield.gov.uk
02083793299

Date of report 27th January 2022

Appendices N/A

Background Papers

The following documents have been relied on in the preparation of this report:

Blue and Green Strategy

This page is intentionally left blank

Blue and Green Strategy Update

Environment Forum 8th
February 2022

Page 47



Content

- Approach to Delivery
- Aims Overview
- Aim 1
- Aim 2 /3
- Aim 4
- Aim 5
- Aim 6
- Aim 7

Approach to Deliver Blue and Green Strategy

- Key officers for strategy delivery
 - Watercourse Team
 - Parks and Open Spaces Team
 - Healthy Streets
 - Planning
- Supplementary teams
 - Infrastructure Delivery Steering Group
- External bodies
 - Natural England
 - Environment Agency
 - Thames Water
 - Historic England

Strategy aims overview

Aim	KPI	Baseline	Target (as minimum)	Owner	Teams
Aim 1. Achieving 25% increase in blue – green infrastructure in Enfield	Pitch Provision / tree planting / publicly accessible Parks / Biodiversity Net Gain	New baselines		Place directorate	Planning, Healthy Streets, Parks, Watercourses, Leisure and Trees
Aim 2 – Ensuring residents can access blue and green spaces within 15 minutes walking distance of their homes and businesses		New indicator	Designated areas of improvement	Planning / Place directorate	Planning, Healthy Streets, Parks and Watercourses
Aim 3 Making our places more distinctive, healthier, attractive and culturally inclusive	Increase the number of green flag sites	Various (Each Year)	More than one publicly accessible park with green status per year	Place directorate	Parks
Aim 4 Achieving a fairer distribution of blue and green infrastructure to overcome deficiencies	Areas deficient in all types of open space	New Baseline	Designated areas of improvement	Planning / Place directorate	Planning, Parks and Watercourses
Aim 5 Creating wilder, more natural spaces to enable biodiversity to thrive, support the restoration of ecosystems and increase interest among people	Wetlands / increase hectares of new woodland	New Baseline	Designated areas of improvement	Place directorate	Parks and Watercourses
Aim 6: Creating a safe and healthy water environment. With increase flood resistance to flooding and drought	Percentage of development in medium and high risk flood areas, new food growing areas, water quality of borough's river's	New baseline	Designated areas of improvement	Place directorate	Planning, Parks and Watercourses
Aim 7: Providing innovative and multi-functional spaces and activities to meet the needs of all users	Increase the proportion of Sites under active conservation management	30%	All publicly owned sites subject to positive land management	Place directorate	Parks and Watercourses

Aim 1 – Achieving 25 % increase in blue – green infrastructure in Enfield

Target

- Sport Pitch Provision
- Proportion of Green Cover
- Publicly Accessible Parks and Open Spaces
- Number of Hectares of new publicly accessible woodland established
- Number of street trees planted
 - Target 500 per year
- Proportion of biodiversity Net Gain

Activity

Current Sport Pitch Strategy to be reviewed during 2022

Additional publicly available space to be delivered through meridian water

680 trees to be planted during 2022 /23

Queens Green Canopy during 2022 for tree installation within community areas and by communities and local school's

Enfield Chase restoration increases accessible woodland by 60 Hectares

Aims 2 / 3

Aim 2 - Ensuring our residents can access blue and green spaces within 15 minutes walking distance of their homes and businesses

Target

- 15 – minute accessibility catchments

Activity

- Focus on areas, as follows:
- Enfield Chase / Slades Hill
- Enfield Town station
- Southbury
- Lower Edmonton
- Edmonton Green
- Upper Edmonton
- Bush Hill Park
- Brimsdown / Enfield Highway
- Palmers Green

Aim 3 - Making our places more distinctive, healthier, attractive and culturally inclusive

Target

- Annual increase in number of green flag sites
- Currently one site within borough – Forty Hall

Activity

- More than one green flag status per year
- Current application for 2022 judging submitted for Forty Hall
- Expanding to Green Heritage and Green Community award

Aim 4 - Achieving a fairer distribution of blue-green infrastructure to overcome deficiencies

Target

- Areas deficient in all types of Open Space
- Increase in playspace provision

Activity

- Focus Open Space improvements in the following areas:
 - Southbury Rail Station
 - Bush Hill Park
 - Upper Edmonton
- Playspace Improvements in the following areas:
 - Enfield Lock
 - Enfield Highway
 - Turkey Street

Aim 5 - Creating wilder, more natural spaces to enable biodiversity to thrive, support the restoration of ecosystems and increase interest among people

Targets

- 300 hectares of new native species and publicly accessible woodland
- 12 new wetland sites
- Increase from baseline: 6 sites (upgrades or extensions) and 3 opportunity sites

Activity

- Enfield Chase Woodland Creation has led to 60 hectares of new woodland 2020-22
- Continued delivery at 30 ha/year will achieve 300 ha target by 2030
- Urban woodlands also planned but with low level contribution to 300 ha target



Aim 5 Continued - Creating wilder, more natural spaces to enable biodiversity to thrive, support the restoration of ecosystems and increase interest among people

Target

- 12 new wetland sites



Activity

- Albany Park River Restoration and Wetlands completed in 2021
- 4 new wetlands due to be constructed in 2022-23 (Oakwood Park, Durants Park, Wilbury Way and Oakthorpe School)

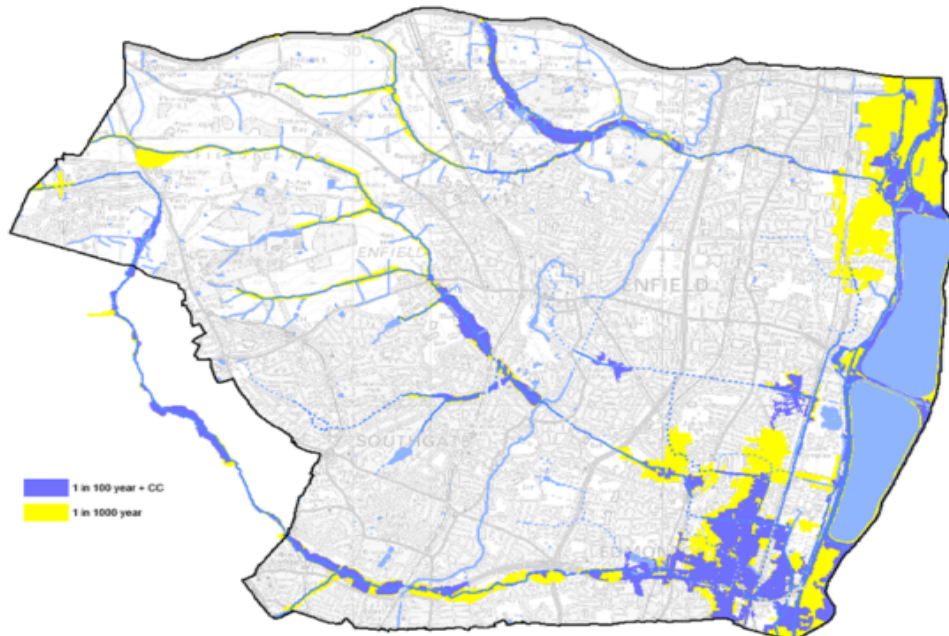
Aim 6 -Creating a safe and healthy water environment, with increased resistance to flooding and drought

Targets

- Direct development from areas of high to medium flood risk, where possible
- Increase number of new food-growing spaces from 75.4 hectares of allotment land baseline
- Improve water quality from poor to good across Pymmes Brook and Salmons Brook

Activity

- Strategic Flood Risk Assessment finalised in early February 2022 (part of Local Plan)
- Identifies suitable locations and policies to ensure new development is safe from flooding
- Potential for community gardens in urban areas – delivered through development or within existing parks and open spaces – currently at 96% capacity within existing allotments
- Opportunities for increased Organic Market Gardening exist within Council-owned greenbelt areas
- Wetlands mitigate the impact of pollution from urban drainage before it is discharged into rivers
- Rain gardens treat pollution from road runoff (almost 200 delivered since 2015)
- Working with partners including the Environment Agency, Thames Water and Transport for London to tackle pollution sources



Aim 7 - Providing innovative and multi-functional spaces and activities to meet the needs of all users

Target

- Increase the proportion of sites under active conservation management (SINC network)

Activity

- Beaver re-introduction planned for March 2022
- Exploring option to adopt conservation grazing management of grasslands within country parks including Forty Hall and Trent Park
- Best practice advice sought from established grazing professionals including Epping Forest and Lee Valley Park
- Review of Natural England Countryside Stewardship during 2022 for implementation in 2023



Questions

